

CLICKDECK[®]

BY EXOLUX



BROCHURE 2021

INNOVATIVE
MODULAR
DECKING SYSTEM



CONTENTS

ABOUT EXOLUX_____	2
APPLICATIONS_____	3
KEY FEATURES _____	4
SYSTEM DIAGRAM_____	5
SYSTEM COMPONENTS_____	7
PRICING AND QUOTES_____	9



ABOUT EXOLUX

EXOLUX, a company focused on innovation for the construction industry, has designed ClickDeck®, a modular decking sub-floor system. ClickDeck® is an easy to assemble, aluminium decking system making installation fast, easy and cost effective. The system has been designed to support a range of surfaces including composite and traditional timber decking boards.

The framing system is highly versatile and can be used as a subfloor system in a range of other applications such as temporary flooring, shed subfloors, marquees and false floors. ClickDeck® can be installed on a range of surfaces such as pavers, concrete, tile and natural ground. ClickDeck® can be built in all shapes and sizes to cater a wide variety of projects.

The system is manufactured, customised and assembled locally in Melbourne and is provided in kit form for ease of installation. The system offers options for both large scale commercial projects as well as DIY-domestic installations. ClickDeck® aims to improve current market options to provide a more cost effective and labour saving alternative.



ClickDeck® is a modular subfloor system designed to support a range of surfaces. The versatile modular system allows it to be built in all shapes and sizes.

Decking Frames

Floating Decks

Temporary Flooring Solution

Council Boardwalks

Marquees and Event Flooring

Shed Sub-floors

Tiny Homes



KEY FEATURES OF CLICKDECK®



Strong structure

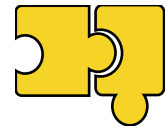
ClickDeck® has been designed using high grade Aluminium and stainless steel providing unparalleled strength and longevity.



Easy Assembly

The lightweight frame and range of brackets / clips makes this the easiest system to build.

The adjustable footing system makes levelling quick and easy.



Fully Customisable

ClickDeck® can be built in all shapes and sizes. It can also support various types of surfaces.



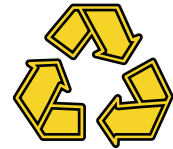
Fire Resistant

ClickDeck® is made from a non combustible aluminium frame. The perfect choice to withstand Australian conditions.



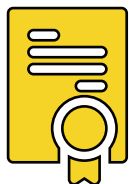
Australian Made

The system is manufactured, customised and assembled locally in Melbourne and can be provided in kit form for ease of installation.



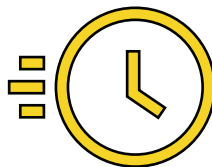
Environmentally Friendly

The system components are made from recycled aluminium and plastic.



Patented System

Australian engineered and designed. The original ClickDeck® system. International patents apply



Fast installation

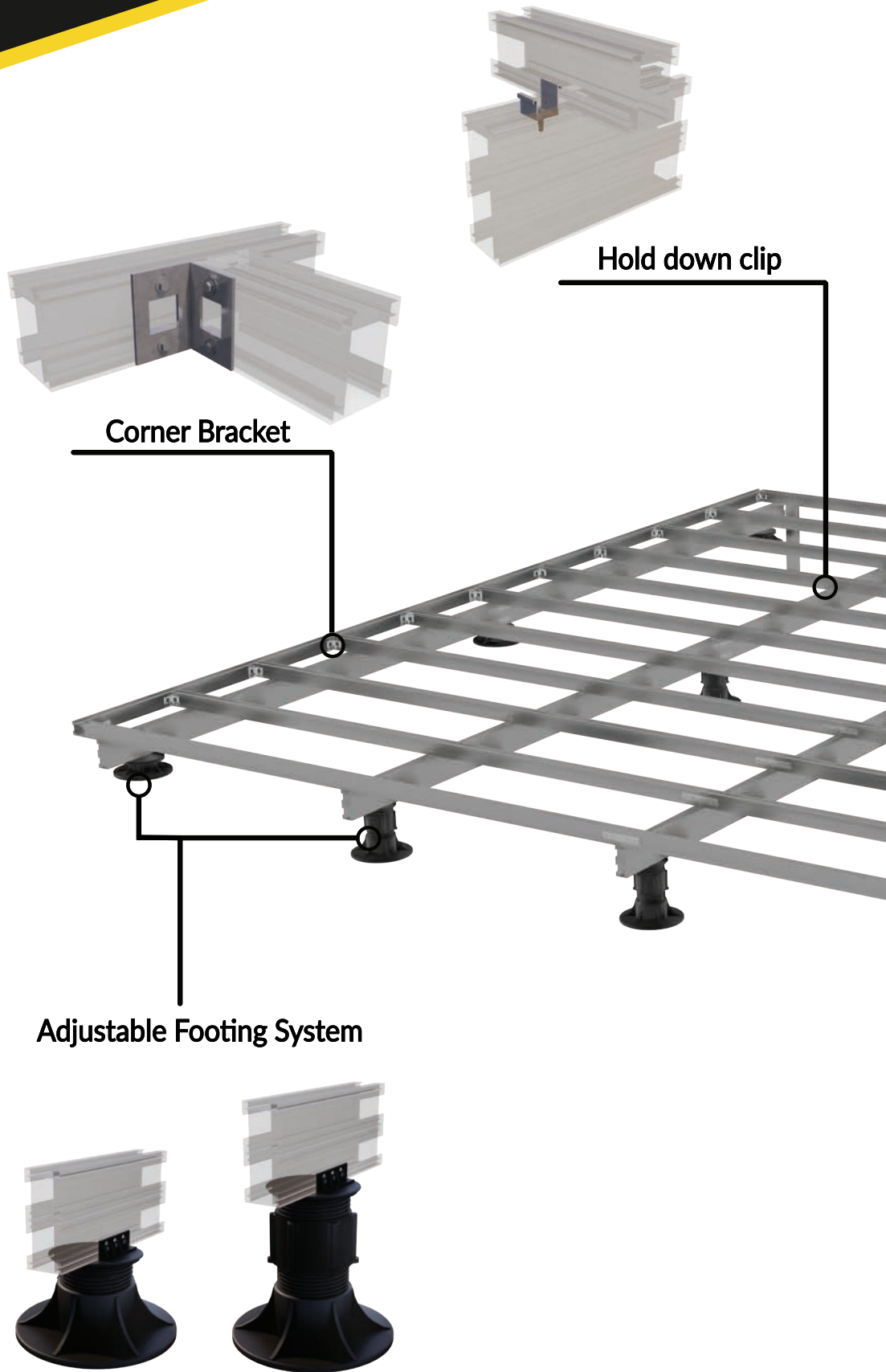
ClickDeck's® Innovative design allows for super quick installation, Saving you time and money.



Versatile height

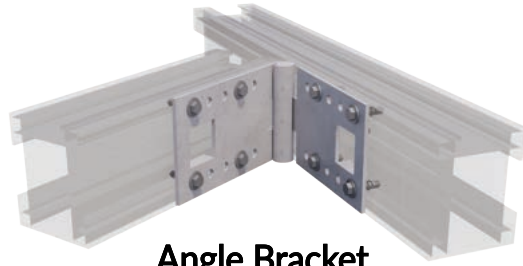
ClickDeck® is a versatile system that can accommodate installations as low as 65mm.

SYSTEM DIAGRAM





Joiner

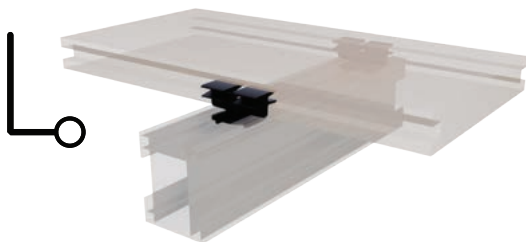


Angle Bracket

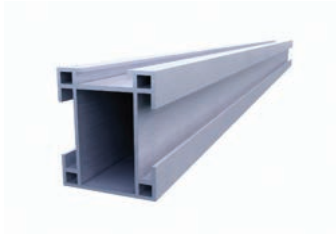


Support Bracket

Deck Clip
(Hidden, No screw system)



SYSTEM COMPONENTS



JOIST

Used to form the structure of the system

(Supports the surface material)

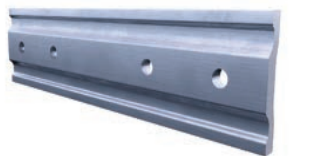


BEARER

Used to form the structure of the system.

(Supports the Joist)

Allows for longer spans and reduces the amount of footings needed.



JOINER

Used to extend the length of both the bearers and joists to the desired length.

(Joist joins takes 2 per join

Bearer joins take 4 per join)



HIDDEN NO SCREW DECK CLIP

An innovative product used to secure compatible composite decking boards to the system

No screws required. Simply clicks into compatible boards to fasten down.



HOLD DOWN CLIP

Used to secure the joist to the bearer.

It can also be used to fasten down the joist/bearers to any surface eg. Timber posts



ADJUSTABLE FOOTING PEDESTALS

A height adjustable footing that supports the framing system and allows for easy installation on a range of surfaces.

Available from 25mm to 800mm tall.
The pedestal can be adjusted at any time allowing for easy levelling

Holds up to 1 Tonne each



CORNER BRACKET

Used to create 90 degree connections in the system.



ANGLE BRACKET

Allows for the system to be built in a variety of angles to accommodate non-standard shapes and configurations.

(No more need for cutting mitre joins)



SUPPORT BRACKET

Used to create vertical 90 degree connections on the joist.

Eg. to create stair kits and fascia board supports.

PRICING AND QUOTES

For pricing and quotes please refer to our deck cost calculator on:
www.clickdeck.com.au for an instant quote

For all other enquiries, please contact our friendly Melbourne team on

Ph: (03) 8202 5166

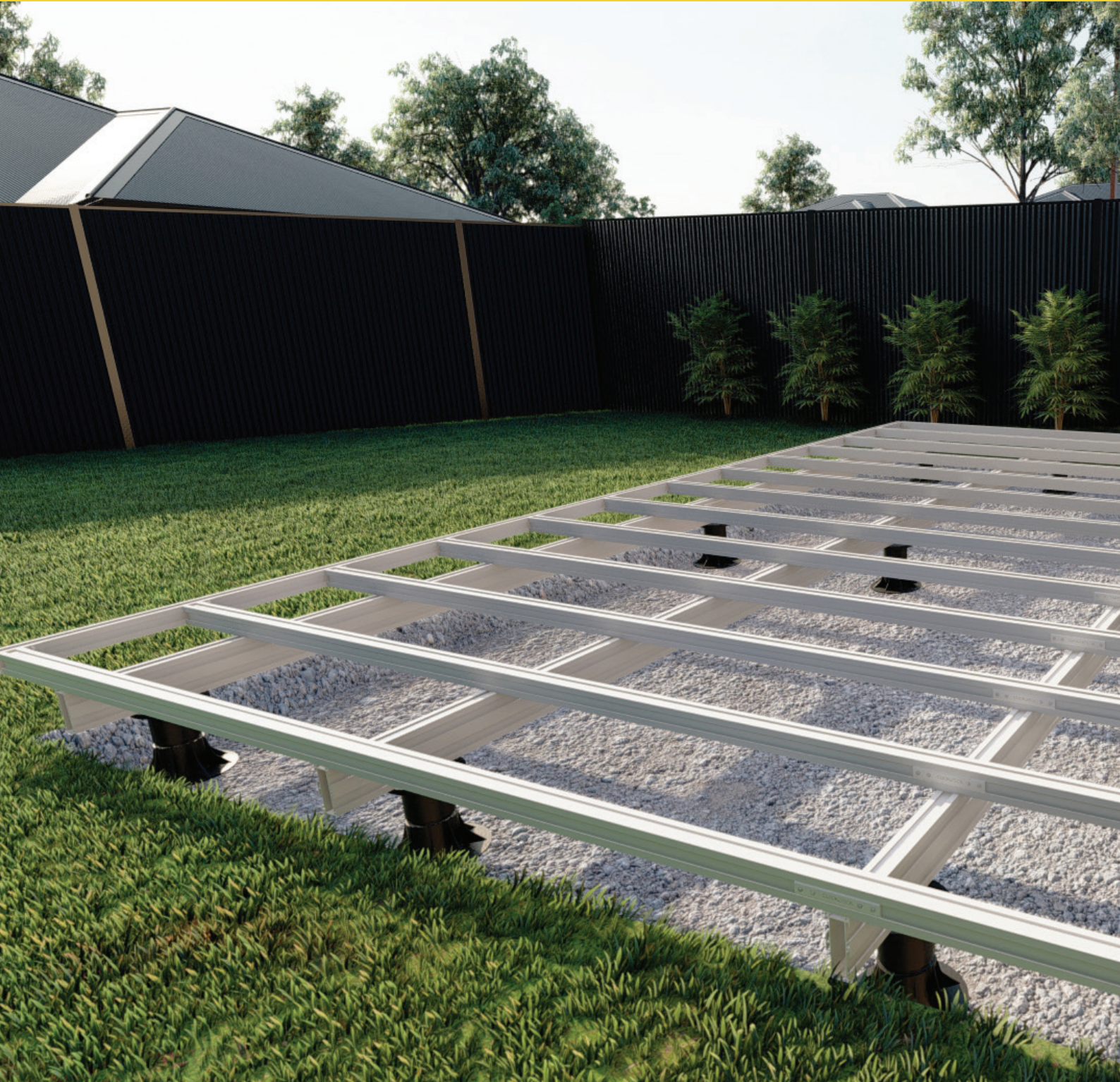
Email: info@exolux.com.au



CLICKDECK[®]

BY EXOLUX

MODULAR DECKING SYSTEM



Ph: (03) 8202 5166
Website: www.clickdeck.com.au
Email: info@exolux.com.au
Address: 2/5 Kelletts Road, Rowville VIC
3178